

CHAIR AND ROCKER

MATERIALS

PRESSURE TREATED LUMBER:

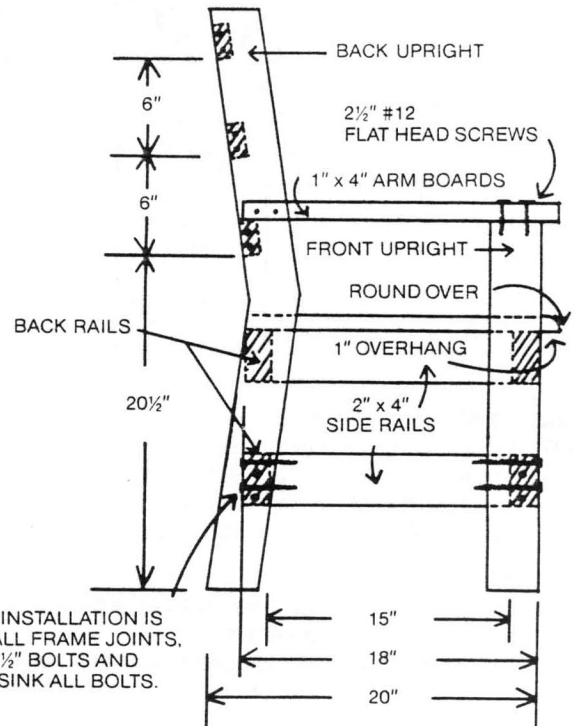
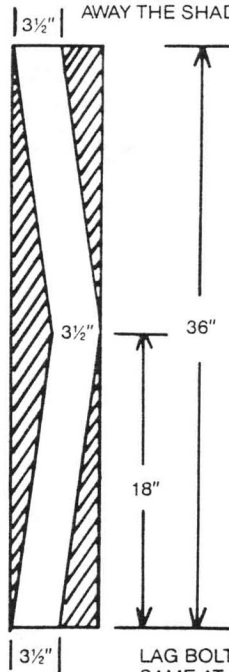
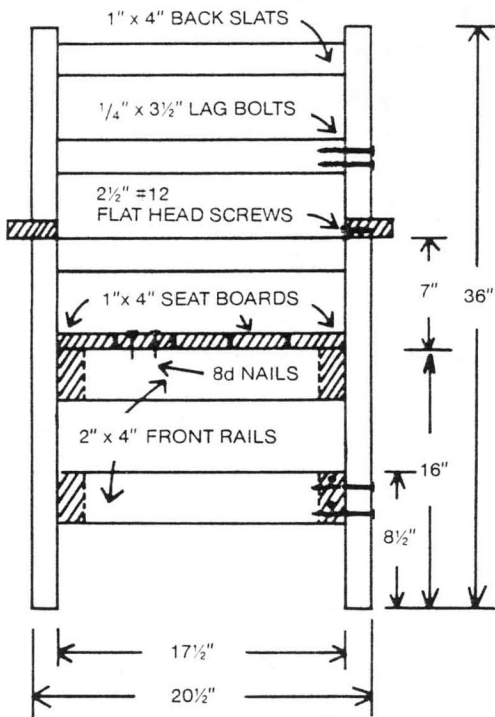
Frame Members

2 pcs 2" x 6" x 36"	Back uprights
2 pcs 3" x 4" x 23"	Front uprights
4 pcs 2" x 4" x 17 1/2"	Front and Back rails
4 pcs 2" x 4" x 15"	Side rails
5 pcs 1" x 4" x 19"	Seat
3 pcs 1" x 4" x 17 1/2"	Back slats
2 pcs 1" x 4" x 19 1/2"	Arms

HARDWARE:

32 pcs 1/4" x 3 1/2"	Zinc-plated lag bolts with washers
12 pcs 1/4" x 3 1/2"	Zinc-plated lag bolts with washers
8 pcs 2 1/2" # 12	Zinc-plated flat head screws
8d	Hot-dipped, galvanized nails

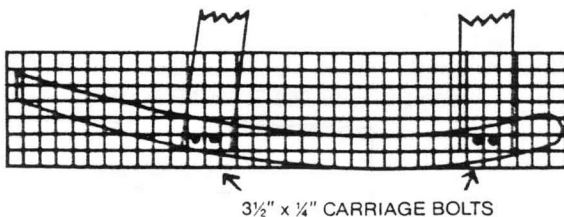
TO MAKE THE BACK UPRIGHTS START WITH A 2" x 6" x 36". MARK AS SHOWN AND CUT AWAY THE SHADED AREAS.



LAG BOLT INSTALLATION IS SAME AT ALL FRAME JOINTS. USE 1/4" x 3 1/2" BOLTS AND COUNTERSINK ALL BOLTS.

FOR ROCKER

To convert to rocker, attach as shown below. Each rocker can be cut from a 2" x 8" x 34". Lay out squares as shown and draw rocker by following diagram below. Each square is 1". Use first rocker as pattern for second.



TO MAKE INTO BENCH SIZE

NOTE: This chair can also be built at twice the width shown to accommodate two persons. Simply double the length of the back slats, front rails, back rails and double the number of seat pieces.

